

Open Music System (OMS 2.3 for Mac)

This is an Acrobat version of the printed OMS 2.3 for Macintosh manual.

TABLE OF CONTENTS

Ch 1: Overview and Installation	1
Introduction to the Open Music System™ (OMS)	1
About this Manual	2
Installing OMS	4
What's Installed	4
Ch 2: Creating a New Studio Setup Document	10
What is a Studio Setup Document?	10
Creating Your First Studio Setup Document	11
Deciding About AppleTalk	11
Searching for MIDI Devices	13
Anatomy of the Studio Setup Document	16
Configuring OMS Drivers	19
Standard Interface	19
IAC Driver	20
SampleCell	21
MacProteus	21
QuickTime Music	22
Ch 3: Defining MIDI Devices	23
Defining an Undefined MIDI Device	23
Deleting MIDI Devices	27
Adding MIDI Devices to a Studio Setup Document	28
Ch 4: Connecting Devices in the Studio Setup Document	29
Connecting MIDI Devices Together	29
Connecting Devices to a MIDI Interface	30
Connecting and Disconnecting MIDI Cables	31
Disconnecting MIDI Devices	32
Ch 5: Special Studio Setup Techniques	33
Using MIDI Thru Ports	33
Using MIDI Mergers	35
Using MIDI PatchBays	37
Using Multiport MIDI Interfaces	39
Using QuickTime™ with OMS	40
Testing Your Studio Setup Document	43

CH 1: OVERVIEW AND INSTALLATION

INTRODUCTION TO THE OPEN MUSIC SYSTEM™ (OMS)

Opcode's Open Music System (OMS) is a set of extensions and programs that bridge the gap between MIDI applications and MIDI hardware. It has many functions and features:

- **OMS acts as a central MIDI driver**

OMS-compatible applications use OMS to communicate with all of your MIDI hardware (such as synthesizers, drum machines, effects devices, or MIDI controllers).

- **OMS provides a central location for defining and storing a detailed description of your MIDI studio**

Use the OMS Setup application to create a Studio Setup document, in which you store a detailed description of the MIDI devices in your studio—including their names, their MIDI channels, and how they're all physically connected.

All OMS-compatible applications reference this Studio Setup document. So, if you change your studio in any way, simply modify your Studio Setup document and all compatible applications are immediately aware of the change.

- **OMS provides a patch name management tool**

Use this tool, appropriately called the Name Manager, to store the names of all the patches in your MIDI devices and provide those names to your OMS-compatible applications.

- **OMS handles all your computer's internal MIDI timing**

This allows you to run multiple OMS-compatible applications simultaneously and in perfect synchronization.

- **OMS gives you access to hundreds of MIDI channels**

The actual number of MIDI channels that OMS can access depends on which MIDI interface(s) you use.

Standard MIDI interfaces (such as Opcode's MIDI Translator) access 16 total MIDI channels. Multiport MIDI Interfaces (such as Opcode's Studio 4 or Studio 5) access 16 MIDI channels on each pair of MIDI In/Out jacks. So, for example, since a Studio 5 has 15 pairs of MIDI In/Out jacks, it can access 240 total MIDI channels.

For more information, see your MIDI interface manuals.

ABOUT THIS MANUAL

This manual assumes that you're familiar with basic Macintosh operations. If you're not, please read your Macintosh manual before installing or using OMS.

Also, you should have a basic understanding of MIDI. If you don't, you may wish to purchase one of the many basic MIDI reference books available from your local book store or music retailer.

This manual accurately describes OMS operations at the time of its printing. However, updates and changes may occur. Always look for the latest information in the *Read Me* files on your master program disk.

WHAT THIS MANUAL DOESN'T COVER

This manual does not discuss the Name Manager. Although the Name Manager is part of OMS, its services are available only from within OMS-compatible applications and not from within the OMS Setup application. Therefore, Name Manager information is contained within your OMS-compatible application manuals.

Also, OMS supports a wide variety of MIDI hardware configurations. Because many of these configurations are of interest to a small percentage of users, Opcode documents them in special on-line documents called *Technical Publications*. These publications address specific topics not covered in the written manual.

You can download the latest Technical Publications for OMS (or any other Opcode products) from Opcode's World Wide Web site at:

- <http://www.opcode.com>

If you don't have Web access, you can contact Opcode to receive Technical Publications through the mail. For more information about contacting Opcode, see [Creating a New Studio Setup Document \(pg. 10\)](#).

MANUAL CONVENTIONS

This manual uses a number of conventions that make it easier to discuss and understand certain on-screen actions.

MOUSE ACTIONS

This manual uses the following terms to describe various mouse actions:

- **Click:** When the manual instructs you to *click*, position the mouse where you're told and press once on the mouse button, then immediately release it.
- **Double-click:** When the manual instructs you to *double-click*, position the mouse where you're told and rapidly press and release the mouse button twice.
- **Press and hold:** When the manual instructs you to *press and hold*, position the mouse where you're told, press the mouse button and hold it down until instructed to release it.
- **Release:** When the manual instructs you to *release*, let up on the mouse button (which you were probably holding down because of an earlier *press and hold* instruction).
- **Drag:** When the manual instructs you to *drag*, position the mouse where you're told, then press and hold the mouse button as you move the mouse.
- **Move:** When the manual instructs you to *move* the mouse, simply move it to another location on the screen without pressing its button.

CHOOSE VS. SELECT

The words "choose" and "select" are often interchangeable in conversational English. In this manual, however, there is a distinct difference between the two terms.

- **Select:** When the manual tells you to "select" something, it stays selected. This is the case with check boxes and menu options.
- **Choose:** When the manual tells you to "choose" something, a one-time action is performed. This is the case with most commands; they perform their chosen action only once.

MENU COMMANDS

This manual uses a shorthand technique to invoke various menu items. For instance, this manual might say:

“Choose **Studio>New Patcher.**”

What this means in plain English is, “choose the **New Patcher** command from the **Studio** menu.” Although the shorthand technique results in sub-standard grammar, it’s easier to read and decipher than a complete sentence because it displays the menu’s hierarchical structure plainly and simply.



Figure 1: Shorthand Invocation of Menu Items

INSTALLING OMS

Before you install OMS, you should:

- Connect your MIDI interface to your Macintosh (as described in your MIDI interface manual).
- Connect your MIDI devices (synthesizers, drum machines, effects units) to the MIDI interface, then turn them on.

There is an installer program on your OMS master disk or CD-ROM. To install OMS:

- ① Insert your master disk (or CD-ROM) and double-click the OMS Installer icon.
- ② Answer each question as prompted by the installer application.
The installer places all the necessary OMS files onto your hard disk automatically.

WHAT’S INSTALLED

The Installer places all the necessary OMS files onto your hard disk automatically. After running the Installer and restarting your Macintosh, you can begin to use OMS.

The following sections list exactly what files the Installer places onto your hard disk and where it places them.

If you are updating from an older version of OMS, your previous Studio Setup documents will be read by the new OMS Setup application.

☆ *CAUTION: Do not relocate or rename any files or folders that the Installer places in the System Folder. You may delete unnecessary files, but some files are essential for OMS operation. See [Software Definitions \(pg. 5\)](#) for more information.*

Here is an overview of the OMS file layout:

- The Open Music System extension is placed into the Extensions folder.
- A folder named “OMS Folder” is created within the System Folder and OMS drivers are placed inside it.
- OMS applications are placed inside the “OMS Applications” folder that, depending on the installer, resides either at the top-level of your hard drive or in a folder named “Opcode.”

You can move the applications folder, but the extension and OMS Folder must remain in their initial locations.










SOFTWARE DEFINITIONS





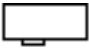

This section describes each file that the installer could possibly place on your hard disk. If, after reading the definition, you are sure you won't need the file, you can throw it away. For instance, if you don't have a Studio 3 interface, there is no reason to have the Studio 3 OMS Driver on your hard drive.

Future releases of OMS may add new files or features, so consult any *Read Me* documents contained on your master disk.


DRIVERS

OMS drivers enable OMS to work with a variety of products that either connect to the Macintosh, or reside within it. You may remove any drivers that you don't need from your hard disk. Drivers are located in the OMS Folder inside your System Folder. The following drivers are currently available:



Driver	Function
 <p>Standard Interface OMS driver</p>	<p>Enables OMS to work with any standard Macintosh MIDI Interface (such as a MIDI Translator, or Studio Plus Two).</p>
 <p>Modem/Printer OMS Driver</p>	<p>Enables OMS to work with a generic standard MIDI interface connected to the Mac's modem port and/or its printer port.</p>
 <p>Studio 3 OMS Driver</p>	<p>Enables OMS to work with an Opcode Studio 3, adding a Studio 3 menu to OMS Setup. See your Studio 3 manual for details.</p>
 <p>Studio 4 OMS Driver</p>	<p>Enables OMS to work with an Opcode Studio 4, adding a Studio 4 menu to OMS Setup. See your Studio 4 manual for details.</p>
 <p>Studio 5 OMS Driver</p>	<p>Enables OMS to work with an Opcode Studio 5, adding a Studio 5 menu to OMS Setup. See your Studio 5 manual for details.</p>
 <p>Studio 64X OMS Driver</p>	<p>Enables OMS to work with an Opcode Studio 64X, adding a Studio 64X menu to OMS Setup. See your Studio 64X's documentation and on-line Help for more information.</p>
 <p>ProSync OMS Driver</p>	<p>Enables OMS to work with Opcode's Translator ProSync interface, adding a Translator ProSync menu to OMS Setup. See your Translator ProSync manual for more information.</p>
 <p>MIDI Time Piece OMS Driver</p>	<p>Enables OMS to work with a Mark of the Unicorn MIDI Time Piece.</p>
 <p>SampleCell OMS Driver</p>	<p>Enables OMS to work with a Digidesign SampleCell card (v1.2 or higher), without MIDI Manager.</p>

Driver	Function
 <p data-bbox="581 296 873 323">MacProteus OMS Driver</p>	<p data-bbox="967 201 1455 260">Enables OMS to work with a Digidesign MacProteus card.</p>
 <p data-bbox="643 468 821 495">Studio Patches</p>	<p data-bbox="967 363 1455 485">Enables OMS to work with the Studio Patches feature of the Studio 4, Studio 5, and Studio 64X. See your Studio Patches manual for details.</p>
 <p data-bbox="630 646 824 674">OMS IAC Driver</p>	<p data-bbox="967 541 1406 632">Provides support for Inter-Application Communication. You must perform a custom installation to use this driver.</p>
 <p data-bbox="558 798 902 825">Quicktime Music OMS Driver</p>	<p data-bbox="967 693 1455 814">Enables OMS to access the music support built in to Quicktime 2.0 and later. See Using QuickTime™ with OMS (pg. 40) for more information.</p>
 <p data-bbox="597 947 863 974">MWM OMS Driver 2.2</p>	<p data-bbox="967 871 1300 930">Enables OMS to access the MacWaveMaker card.</p>
 <p data-bbox="667 1119 786 1146">QSDriver</p>	<p data-bbox="967 1029 1455 1119">Enables OMS to use the Alesis QS7 as a MIDI interface (when it's connected directly to the Macintosh).</p>





EXTENSIONS





Extension	Function
 <p data-bbox="610 1455 844 1482">Open Music System</p>	<p data-bbox="967 1346 1455 1472">This is the system extension that routes MIDI between applications and MIDI devices. You should not remove this file from your hard disk.</p>

APPLICATIONS

Application	Function
 OMS Setup	<p>OMS Setup is an application that you use to tell OMS about your MIDI studio. This information is contained and displayed in a Studio Setup document. For more information, see <i>Chapter 2: Creating a New Studio Setup Document</i>. You should not remove this application from your hard disk.</p>
 Studio Patches Editor	<p>This application allows you to create patches for Opcode's Studio 4 and Studio 5 multi-port interfaces. For more information, see the Studio Patches Manual.</p>

OTHER FILES INSTALLED BY OMS

File	Function
 OMS Device Database	<p>Contains information about various MIDI devices. It partially determines which devices appear in the manufacturer/model menus in OMS Setup (Other applications may install their own additions to OMS Device Info as separate files and, if you use Galaxy, any devices in the Galaxy Installed Modules file are added to the manufacturer/model menus). The manufacturer/model menus are discussed in <i>Chapter 3: Defining MIDI Devices</i>. You should not remove this file from your hard disk.</p>
 OMS Name Manager	<p>A component of OMS that supports sharing of patch, note and control names between applications.</p>
 Galaxy Name Provider	<p>Enables OMS to read patch names provided by Opcode's Galaxy program.</p>
 Studio Patches Name Provider	<p>Enables OMS to read patch names provided by the Studio Patches documents. See your Studio Patches manual for more information.</p>

File	Function
 <p>OMS Time Manager</p>	<p>A component of OMS that provides timing service. With this module, diverse applications can be synchronized to one clock source—OMS.</p>
 <p>Serial Switch</p>	<p>The Serial Switch control panel is required to use MIDI applications with the Mac IIx, Quadra 900, or Quadra 950. Choose “Compatible” rather than “Faster” in the control panel.</p> <p>The Serial Switch is automatically installed only if you have one of the requisite computers. If you don’t, and you manually installed the Serial Switch, you may remove it from your hard disk.</p>
 <p>Factory Names</p>	<p>This folder contains factory default name lists for many popular MIDI devices. OMS Name Manager-compatible applications subscribe to these names by default, though you can override the subscription and create your own name lists.</p>
 <p>OMS Preferences</p>	<p>Customized choices and a reference to your current Studio Setup are stored in files within this folder.</p>

EASY SETUP VS. CUSTOM SETUP

There are two methods for defining a Studio Setup document:

- **Easy Setup**

This automated procedure is invoked when there is no current Studio Setup document and an OMS-compatible application is opened. In general, it’s a menu-driven setup procedure and, as such, is not discussed in this manual.

Remember, Easy Setup was designed to be a “quick and dirty” way to get going. If you have a complicated studio configuration (for example, devices connected via MIDI Thru jacks, or devices whose input and output port numbers aren’t the same), you will need to use the OMS Setup application to create a custom Studio Setup document.

- **Custom Setup**

If you need a higher degree of control, you can use the OMS Setup application to create customized Studio Setup documents. This is the procedure that’s described in this manual.

CH 2: CREATING A NEW STUDIO SETUP DOCUMENT

This chapter teaches you to use the OMS Setup application to create a new Studio Setup document.

WHAT IS A STUDIO SETUP DOCUMENT?

A Studio Setup document is an exact model of your MIDI Studio. A fully configured Studio Setup document contains information about:

- MIDI interfaces connected to your Macintosh (such as an Opcode Studio 64X or Studio 5).
- MIDI cards installed inside your computer (such as a MacProteus™ or SampleCell™).
- Software-based synthesizers and other “Virtual Synthesizers” (such as Apple’s QuickTime Musical Instruments).
- MIDI devices connected to MIDI interfaces (such as synthesizers, drum machines, effects devices, and MIDI controllers).

Additionally, a Studio Setup document contains information about how all this hardware is physically connected.

You can create and store any number of Studio Setup documents to describe any number of studios or studio configurations, but OMS can reference only one Studio Setup document at a time. This is called the *current* Studio Setup document.

Once you’ve defined a current Studio Setup document, OMS knows each instrument’s name, port, MIDI reception channel(s), Device ID and many other details. This information is provided to all OMS-compatible applications. Within these applications, you simply select and work with devices by name—OMS handles the rest. Any time you change your current Studio Setup document, OMS automatically provides the updated information to all your OMS-compatible applications.

CREATING YOUR FIRST STUDIO SETUP DOCUMENT

To create a new Studio Setup document:

- ① If you have not already done so, install any MIDI cards and interfaces, connect your MIDI devices to your MIDI interface, and turn them on.
See your card, interface, and/or MIDI device manuals if you need help.

You create and modify Studio Setup documents using an application called OMS Setup, so...

- ② Find the **OMS Setup** application.
By default, the OMS Setup application is in the “OMS Applications” folder that, depending on the installer, is either at the top-level of your hard drive or in a folder named “Opcode.”
- ③ Double-click **OMS Setup** to start the program.
If AppleTalk is active, you’ll see the dialog box shown in [Figure 2](#). Read the next section to learn about OMS and its use with AppleTalk.
If you don’t see the dialog box shown in [Figure 2](#), it means you’re not using AppleTalk. Skip ahead to [Searching for MIDI Devices \(pg. 13\)](#).

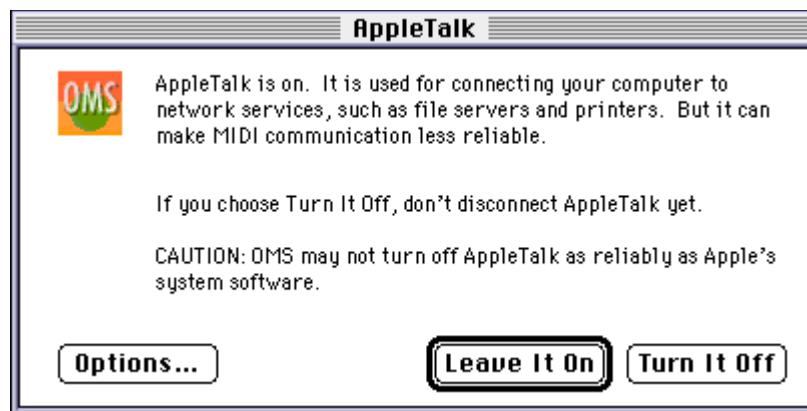


Figure 2: AppleTalk Alert

DECIDING ABOUT APPLETALK

If AppleTalk is active when you launch OMS Setup, you’ll see the dialog box shown in [Figure 2](#).

AppleTalk is a Macintosh communication protocol for local area networks (LANs). Many laser printers require AppleTalk to communicate with your Macintosh. Unfortunately, AppleTalk can interfere with MIDI data arriving at either the modem port or the printer port.

In general, you should choose to turn off AppleTalk whenever you plan to record or play MIDI data using an OMS-compatible MIDI application. The exception is if you need to print from a MIDI application, such as Opcode’s Overture (a music notation program).

To continue:

- ① Click the **Options** button.
The AppleTalk Options dialog box appears.

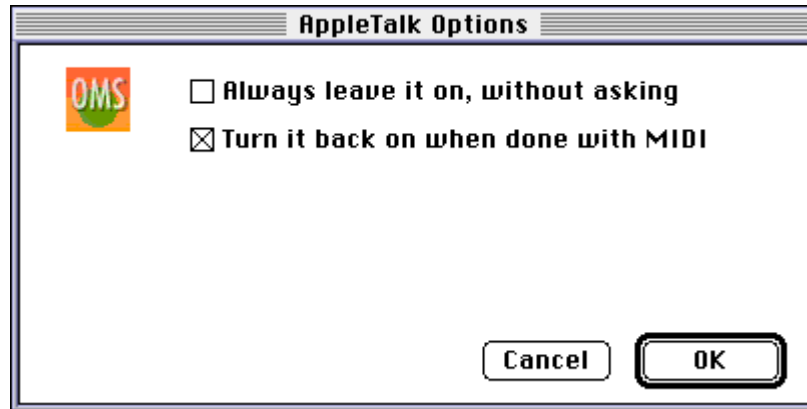


Figure 3: AppleTalk Options

- ② Check the desired options, then click **OK**.
If you check **Always leave it on, without asking**, then OMS will never again prompt you with the AppleTalk dialog. Use this option with extreme caution—remember that AppleTalk interferes with MIDI data reception.
If you check **Turn it back on when done with MIDI**, then AppleTalk is automatically re-launched when you quit all OMS-compatible applications.
- ③ In the AppleTalk alert box, click **Turn it Off**.
OMS Setup remembers whether you want AppleTalk on or off, and future alerts display your previous choice as the default (highlighted) button.
You'll see the dialog box shown in [Figure 4](#).

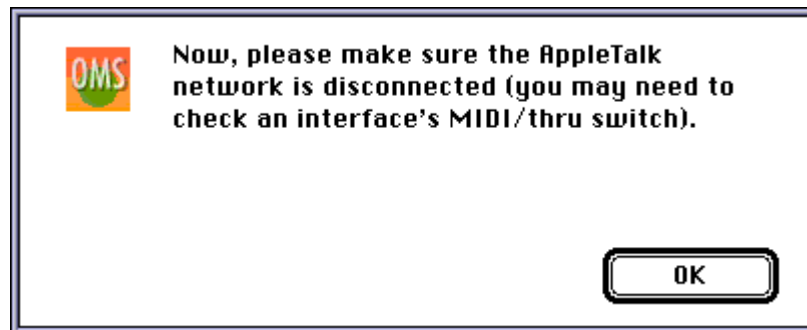


Figure 4: Disconnect AppleTalk Dialog Box

- ④ Disconnect your AppleTalk network, then click **OK**.

SEARCHING FOR MIDI DEVICES

If you've never created a Studio Setup document (using either Custom or Easy setup), then you'll see the dialog box shown in [Figure 5](#).

If you've already created a Studio Setup document, but wish to create a new one, choose **File>New Studio Setup** to open the dialog box shown in [Figure 5](#).

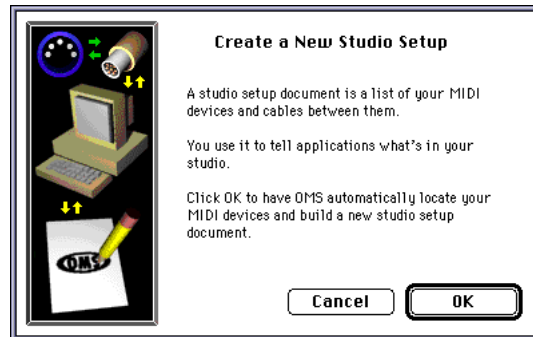


Figure 5: Configure OMS Dialog

- ⑤ Click **OK** to proceed.
The following dialog box appears.

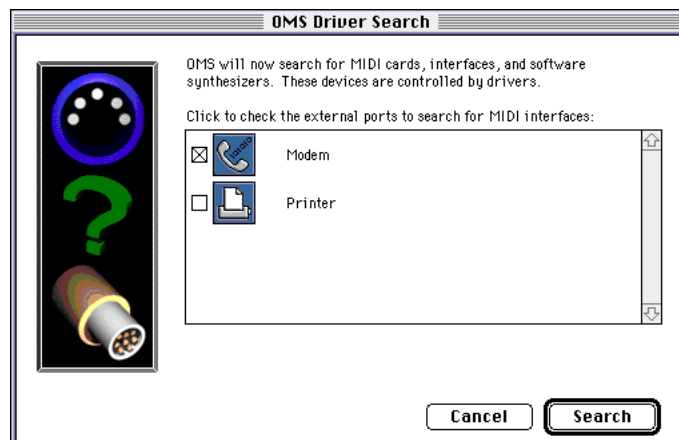


Figure 6: OMS Driver Search Dialog Box

- ⑥ Check the box next to each serial port that's connected to a MIDI interface.
You should check only those serial ports that you'll use for MIDI.
- ⑦ Click **Search**.
OMS scans the selected ports, looking for any MIDI devices connected to them. It also scans your Macintosh looking for MIDI cards (such as a SampleCell or MacProteus) and other "Virtual Synthesizers" (such as QuickTime Musical Instruments).

When the search is complete, you'll see a dialog box similar to the one shown in [Figure 7](#).

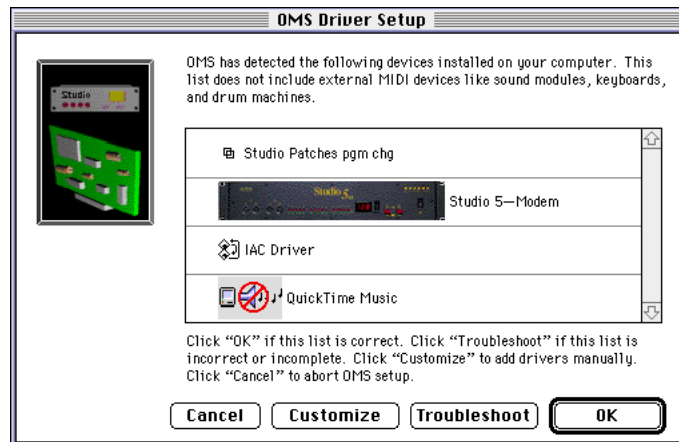


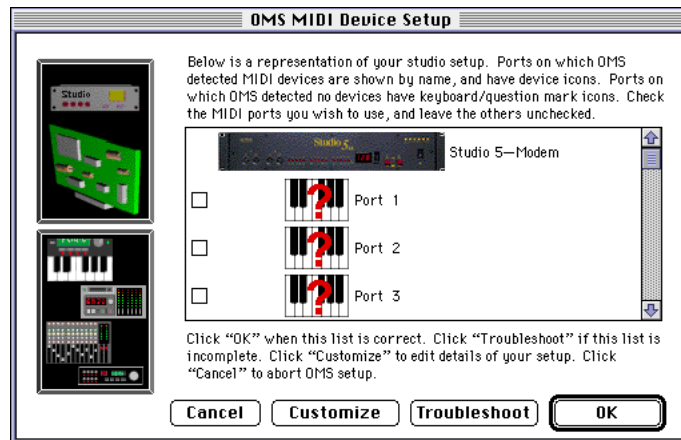
Figure 7: OMS Driver Setup Dialog Box

The OMS Driver Setup dialog box gives you four options:

- **Cancel:** Click this button to abort the entire setup procedure.
 - **Customize:** Click this button if you want to manually add interfaces to the list. When you click the Customize button, a series of dialog boxes will appear asking you whether or not you want to add each type of MIDI interface currently supported with an installed OMS driver.
 - **Troubleshoot:** Click this button if the previous procedure failed to identify your MIDI interface. OMS will present you with some information about possible sources of trouble and offer to scan again for interfaces.
 - **OK:** Click this button if your MIDI interface, cards, and virtual synthesizers were all properly identified.
- ⑧ If this dialog box lists all your MIDI interfaces, drivers, and virtual synthesizers, click **OK**.

OMS next attempts to identify any MIDI devices connected to your interface's MIDI ports. Many newer devices can identify themselves to OMS, automatically configuring themselves in the Studio Setup document.

When the MIDI device query is finished, you'll see a dialog box similar to the one shown below.



MIDI ports containing devices recognized by OMS are named and tagged with a default icon. MIDI ports with devices not recognized by OMS are shown with a generic name and an undefined device icon.



- ⑨ Check the box next to every MIDI port that contains a device you wish to include in your final Studio Setup document.
 - ⑩ Click **OK**.
OMS Setup opens a standard Save As dialog box.
 - ⑪ Save your Studio Setup document with whatever name you like, then click **Save**.
OMS Setup saves the Studio Setup document and displays it on the screen.
[Figure 8 \(pg. 16\)](#) illustrates a typical Studio Setup document.
- ☆ **IMPORTANT:** Your Studio Setup document will most likely look different than the one shown in [Figure 8](#) because it's based on **your** MIDI hardware.

ANATOMY OF THE STUDIO SETUP DOCUMENT

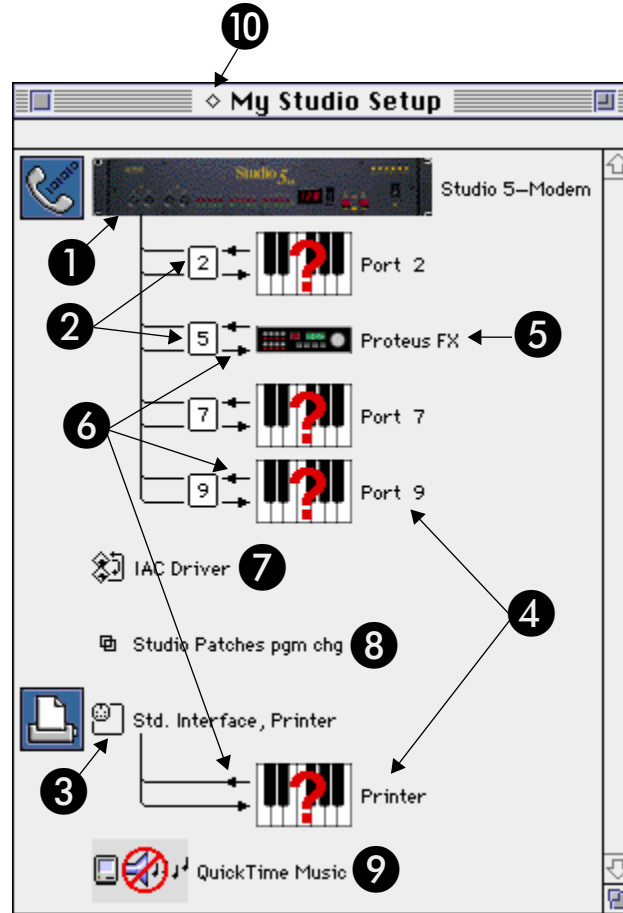


Figure 8: Anatomy of a Studio Setup Document

[Figure 8](#) shows many of the various elements that can appear in a Studio Setup document. These are:

1 Multiport MIDI Interface

This example shows a Studio 5 multiport interface connected to the modem port.

2 MIDI ports on a multiport MIDI interface

Multiport MIDI interfaces display each of their MIDI ports in the Studio Setup document.

By default, if OMS Setup can't auto-detect a specific MIDI device, it creates an undefined MIDI device on each port.

If you have only a standard MIDI interface (such as a MIDI Translator II or Studio 3), then the Studio Setup document won't contain any port numbers for that interface.

3 Standard MIDI interface

This example shows a standard MIDI interface (named “Std. Interface, Printer”) connected to the printer port.

By default, OMS Setup connected a single undefined MIDI device (named “Printer”) to the interface. The following topic contains more information about undefined MIDI devices.

4 Undefined MIDI devices

Not all MIDI devices are capable of identifying themselves to OMS Setup. OMS Setup has no way of detecting what other MIDI devices are connected to your MIDI interface (or even if any are actually connected). Therefore, it creates a generic undefined MIDI device on each MIDI port for which it doesn’t auto-detect a device. You can recognize an undefined device by its question mark icon.

See *Chapter 3: Defining MIDI Devices* to learn how to define MIDI devices in a Studio Setup document.

5 Defined MIDI device

When a device is “defined,” it means that OMS knows its name, MIDI channel, and all its other MIDI attributes. Defined devices can also be given one of numerous different icons, which appear in the Studio Setup document.

You can define devices manually (as discussed in *Chapter 3: Defining MIDI Devices*) or OMS may automatically detect some MIDI devices and create default definitions for them.

6 MIDI cables (signal flow)

The connecting lines indicate MIDI cables and the arrows indicate the signal flow direction.

By default, OMS Setup assumes you have a pair of MIDI cables connected to each undefined MIDI device.

In *Chapter 4: Connecting Devices in the Studio Setup Document*, you’ll learn how to modify the Studio Setup document connections so that they mirror your actual MIDI studio.

7 IAC Driver

This icon indicates that the IAC driver is included in your Studio Setup document, allowing multiple OMS-compatible applications to run simultaneously and communicate with one another. For more information, see [IAC Driver \(pg. 20\)](#).

8 Studio Patches Program Change Driver

This icon appears only if you installed the Studio Patches application (which is included with Opcode’s OMS-compatible multiport interfaces (such as the Studio 4, Studio 5, or Studio 64X). Your Studio Patches manual discusses the Studio Patches driver in detail.

9 QuickTime Music Driver

This driver indicates that you're able to use Apple's QuickTime Musical Instruments with OMS. For more information, see [Using QuickTime™ with OMS \(pg. 40\)](#).

10 Current Studio Setup indicator

The *current* Studio Setup document is indicated by a small diamond to the left of its name.

A current Studio Setup document contains a diamond to the left of the document's name.



A non-current Studio Setup document does not contain the diamond.



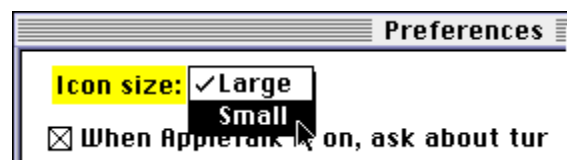
Figure 9: Current Studio Setup Indicator

As discussed in [What is a Studio Setup Document? \(pg. 10\)](#), you can create and save any number of Studio Setup documents, each of which may reflect different studio configurations (or even different studios). But OMS can reference only *one* Studio Setup document at a time—this is called the *current* Studio Setup document.

USING SMALL ICONS

OMS Setup lets you display devices using either large or small icons. If you want to decrease the size of icons in your OMS Setup document, then:

- 1 Choose **Edit>Preferences**.
OMS Setup opens the Preferences dialog box.
- 2 From the **Icon Size** pop-up menu, select **Small**.



OMS Setup uses small icons to display your Studio Setup document.

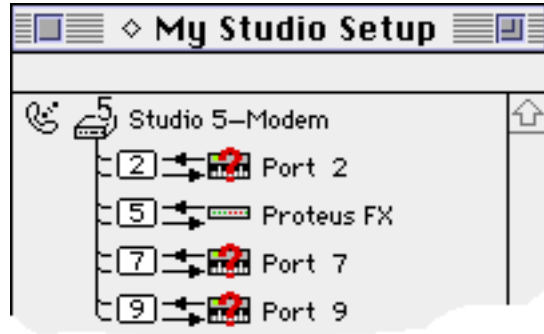


Figure 10: Studio Setup document with small icons

CONFIGURING OMS DRIVERS

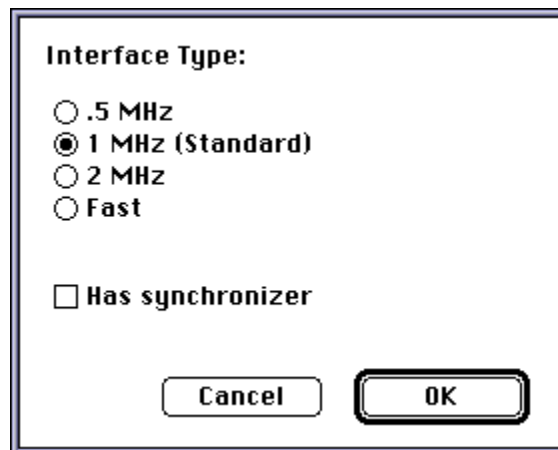
Now that you have a Studio Setup document that recognizes all your MIDI interfaces and MIDI cards, you'll need to configure their OMS drivers. In general, most Opcode interfaces come with manuals that describe how to configure their OMS drivers. The following sections contain information about configuring a few of the other types of OMS drivers.

STANDARD INTERFACE

If the Standard Interface OMS driver is in your OMS folder and one or more standard MIDI interfaces are connected to the Macintosh, you'll see an icon for each serial port that OMS Setup finds connected to a standard interface.

To configure a standard MIDI interface driver:

- ① In your Studio Setup document, double-click a standard interface icon to open its configuration dialog box.



- ② Select the appropriate clock frequency and synchronizer settings for your interface, then click **OK**.

The clock frequency is usually determined automatically. Select the **Has synchronizer** option only if the interface has built-in synchronization functions. See your standard interface manual if you have questions.

IAC DRIVER

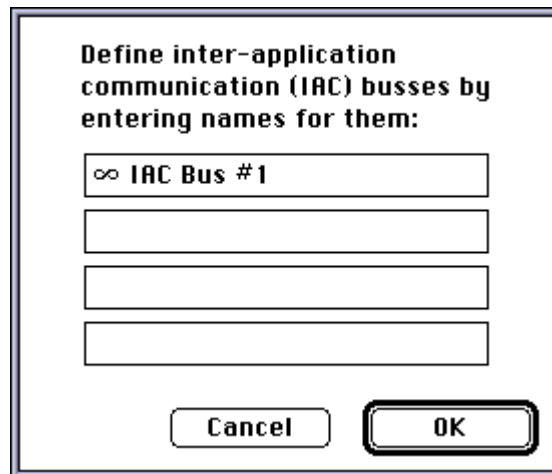
The IAC (Inter Application Communication) driver provides a means for various OMS-compatible MIDI applications to communicate with one another.

The IAC driver provides up to 4 busses, which any application may send to and/or receive from. For example, using one bus, you can run Digidesign's Pro Tools and Opcode's Vision programs simultaneously -- using one to control the playback of the other. Using another bus, you could send MIDI information from Vision to Opcode's Max, using its programmable modules to perform sophisticated MIDI processing.

- ☆ *IMPORTANT: This driver is not installed as part of OMS' Easy installation process so, if you wish to use it, you must perform a Custom installation.*

To define and name busses:

- ① In your OMS Studio Setup document, double-click the IAC Driver icon to open its Configuration dialog box.



- ② Type a name for each bus you wish to activate, then click **OK**.

There will be one bus for each name you enter.

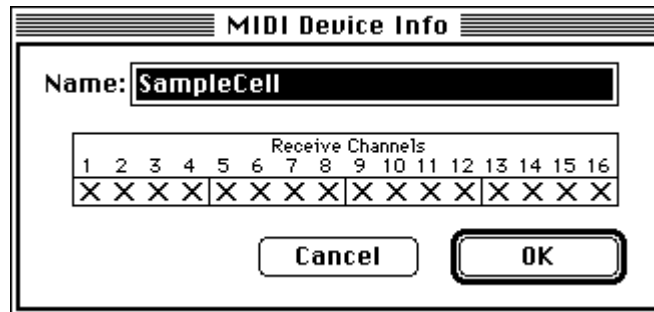
Initially, there is only one bus with the name "IAC Bus #1." You can rename this bus or add new busses, as desired.

SAMPLECELL OMS Setup displays one SampleCell icon for each SampleCell card found by OMS Setup.

- ① Double-click a SampleCell icon.



Its MIDI Device Info dialog box opens.



- ② Rename the device (if desired), select the device's MIDI receive channels, then click **OK**.

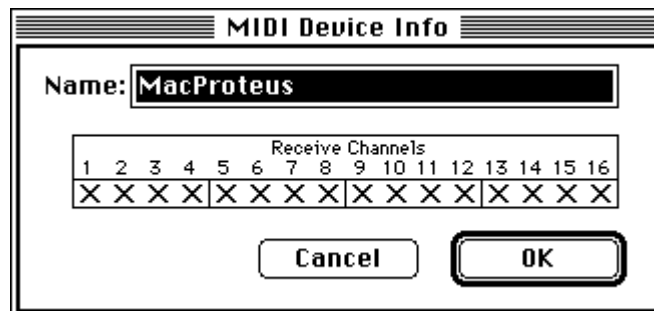
Make sure you have version 1.2 or higher of the SampleCell editor and the SampleCell driver. Remove the SampleCell MIDI Manager driver from your System Folder if you're using the OMS driver. The only time you need the original SampleCell MIDI Manager driver is if you choose to use MIDI Manager without OMS.

MACPROTEUS OMS Setup displays one MacProteus icon for each MacProteus card found by OMS Setup.

- ① Double-click a MacProteus icon.



Its MIDI Device Info dialog box opens.



- ② Rename the device (if desired), select the device's MIDI receive channels, then click **OK**.

Keep the MacProteus MIDI Manager driver in your System Folder if you wish to use the MacProteus Front Panel application—otherwise you can remove it. Also, the MacProteus Batteries extension is compatible with the OMS MacProteus driver.

QUICKTIME MUSIC

Configuration and use of this driver is discussed in [Using QuickTime™ with OMS \(pg. 40\)](#).

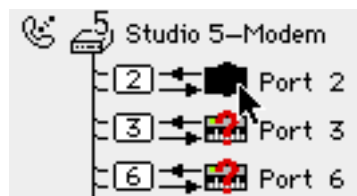
CH 3: DEFINING MIDI DEVICES

In this chapter, you'll learn how to define the MIDI devices in your Studio Setup document so that they accurately represent the hardware in your MIDI studio.

DEFINING AN UNDEFINED MIDI DEVICE

If the *current* Studio Setup document isn't already open, choose **File>Open Current Studio Setup**, then follow through these steps to learn how to define a MIDI device in your Studio Setup document.

- ① Click an undefined MIDI device to select it (highlighting it).



- ② Choose **Studio>MIDI Device Info**.
Alternately, you could simply double-click a MIDI device icon.
OMS Setup opens a MIDI Device Info dialog box for the selected MIDI device.

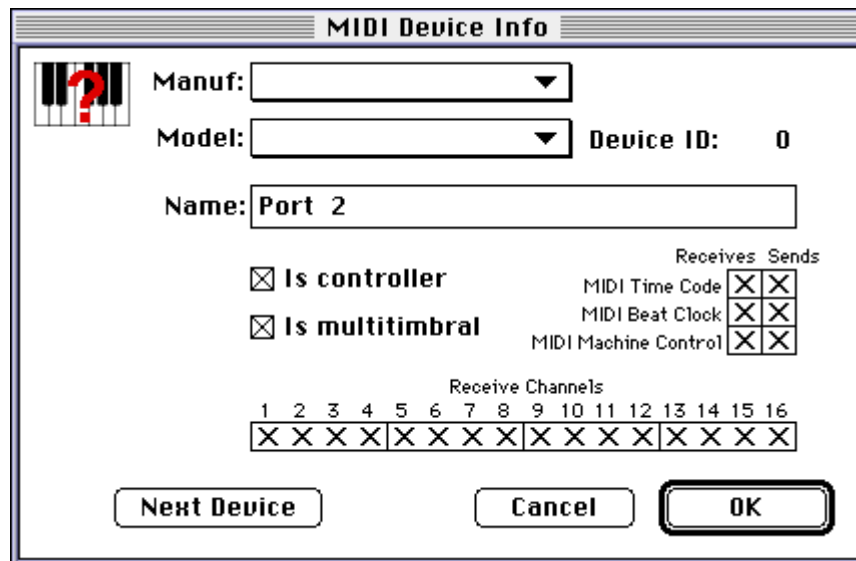


Figure 11: MIDI Device Info Dialog Box

DEFINING MANUFACTURER AND MODEL

You'll first want to define the MIDI device's manufacturer and model number. To do so:

- 1 Select a manufacturer from the **Manuf** pop-up menu.

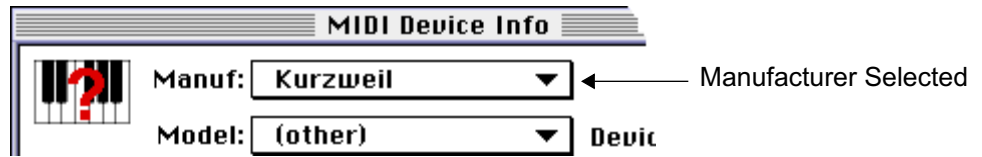


Figure 12: Select a Manufacturer

- 2 Select a model from the **Model** pop-up menu.

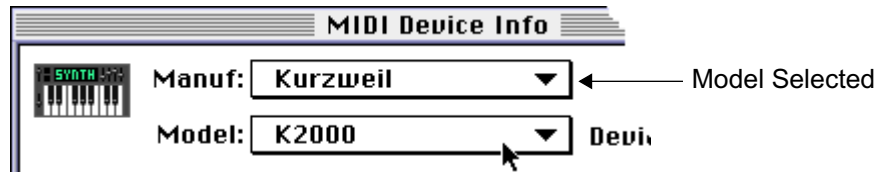


Figure 13: Select a Model

OMS Setup automatically fills in the **Name** field with the model's name. You can type in a different name if you desire.

DEFINING THE MIDI CHARACTERISTICS

You'll next want to define the MIDI characteristics of the selected device.

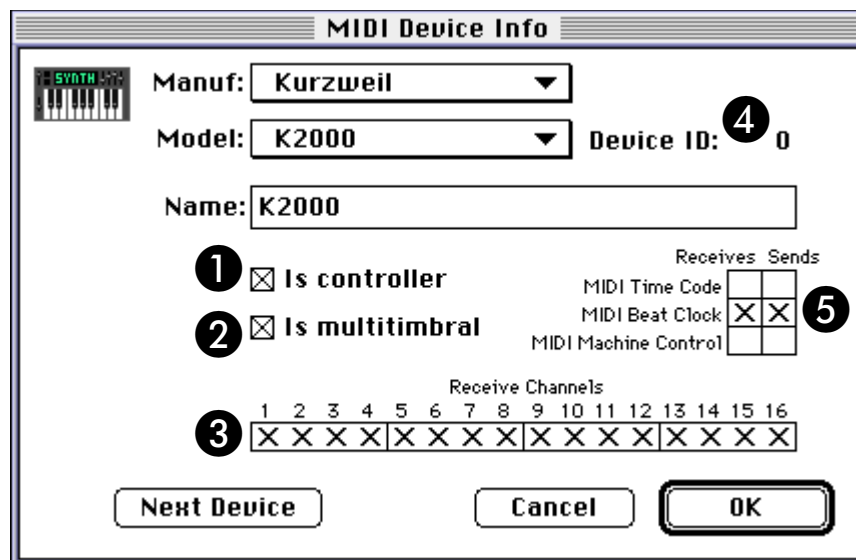


Figure 14: MIDI Characteristics

[Figure 14](#) shows the various MIDI characteristics contained in the MIDI Device Info dialog box. These are:

1 Is controller check box

Check this check box if your MIDI device is a MIDI controller (such as a keyboard, MIDI guitar, MIDI drum pads, and so on).

This check box is automatically set when you define a manufacturer and model, but you can override the default setting.

2 Is multitimbral check box

Check this check box if your MIDI device is multitimbral.

Multitimbral means that the device is capable of receiving MIDI data on more than one channel. Most modern synthesizers are multitimbral—many early MIDI synthesizers are not.

This check box is automatically set when you define a Manufacturer and Model, but you can override the default setting.

3 MIDI Receive Channels

Check all the MIDI channels on which your MIDI device receives MIDI data.

For example, if your synthesizer is set up to receive only on MIDI channels 1 through 6, check only the boxes numbered 1 through 6.

If the **Is multitimbral** check box is not checked, your device can receive on only one MIDI channel, so you can check only one box at a time.

4 Device ID

Set the Device ID numerical to match the Device ID setting on your MIDI device.

If the **Is multitimbral** check box is not checked, the Device ID is automatically set to match the MIDI Receive Channel. You can enter a different Device ID number if you wish.

See your MIDI device manual to learn how to view (or change) its Device ID.

5 MIDI Synchronization check boxes

Check the **MIDI Time Code** check boxes only if: 1) your MIDI device sends or receives MIDI Time Code, and 2) you intend to use it to synchronize that MIDI device to your OMS-compatible MIDI sequencer.

Check the **MIDI Beat Clock** check boxes only if: 1) your MIDI device sends or receives MIDI Beat Clock, and 2) you intend to use it to synchronize that MIDI device to your OMS-compatible MIDI sequencer. Many drum machines and synthesizers with built-in sequencers are able to send and receive MIDI Beat Clock.

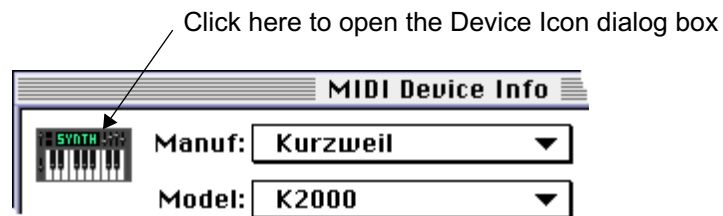
Check the **MIDI Machine Control** check boxes only if: 1) your MIDI device sends or receives MIDI Machine Control, and 2) you intend to use it to synchronize that MIDI device to your OMS-compatible MIDI sequencer.

See your MIDI device manuals to learn whether or not they support any of these synchronization methods.

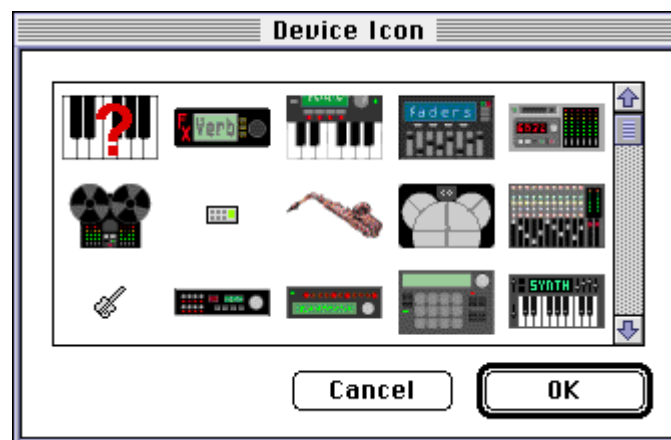
ASSIGNING A DEVICE ICON

When you select a Manufacturer and Model, OMS Setup automatically assigns an icon to that MIDI device. To select a different icon:

- 1 Click the icon in the upper left corner of the MIDI Device Info dialog box.



The Device Icon dialog box appears.



- 2 Click the desired icon in the scrolling list, then click **OK**.

☆ **NOTE:** You can open the Device Icon dialog box directly from the Studio Setup Window. To do so, either 1) click the device's icon to select it, then choose **Studio>Device Icon**, or 2) option-double-click the device's icon.

FINISHING THE DEFINITION

When you've finished defining a MIDI device, click the **OK** button in the MIDI Device Info dialog box.

Your Studio Setup document now contains a fully defined MIDI device, complete with the device's name and icon.

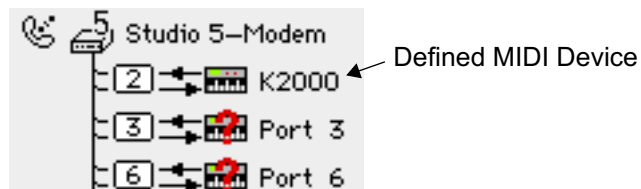


Figure 15: Studio Setup Document with a Defined MIDI Device

DEFINING ADDITIONAL MIDI DEVICES

Repeat all the steps discussed in [Defining an Undefined MIDI Device \(pg. 23\)](#) until you've defined every MIDI device in your studio, then choose **File>Save** to save your Studio Setup document.

DELETING MIDI DEVICES

If your Studio Setup document contains MIDI devices that aren't in your actual MIDI studio, you can delete them from the document.

This is particularly useful for:

- removing undefined devices created by the OMS Setup application
- removing devices no longer contained in your MIDI studio.

To remove the unused MIDI devices from your Studio Setup document:

- ① Click a MIDI device to select it (highlighting it).

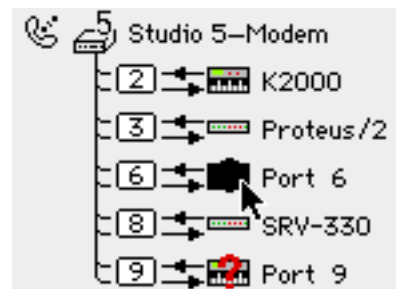


Figure 16: Selecting an Unused MIDI Device

- ② Choose **Edit>Delete**.
OMS Setup removes the MIDI Device from your Studio Setup document.
- ③ Continue this process for all remaining, unused MIDI devices.

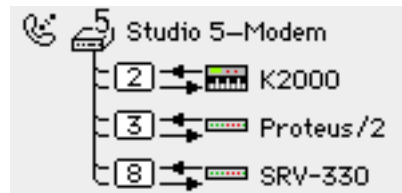


Figure 17: Studio Setup Document with No Undefined MIDI Devices

ADDING MIDI DEVICES TO A STUDIO SETUP DOCUMENT

Sometimes you'll need to add a MIDI device to your Studio Setup document. To do so:

- ① Choose **Studio>New Device**.
OMS Setup opens the MIDI Device Info dialog box.
- ② Configure the dialog box as discussed in [Defining an Undefined MIDI Device \(pg. 23\)](#).
OMS Setup creates a new device and automatically connects it to the selected device (if there is one) or to the top-most interface in your Studio Setup document.

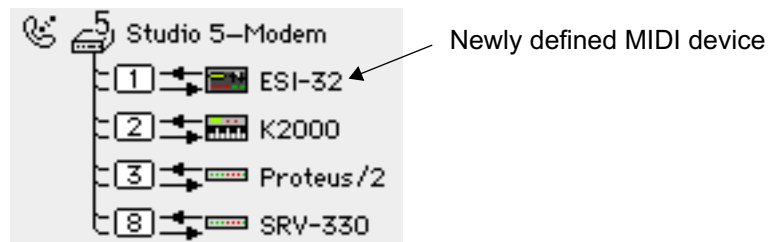


Figure 18: New, Unconnected MIDI Device

Chapter 4: Connecting Devices in the Studio Setup Document will tell you how to connect or reconnect MIDI devices in a Studio Setup document.

CH 4: CONNECTING DEVICES IN THE STUDIO SETUP DOCUMENT

In this chapter, you'll connect all the MIDI devices in your Studio Setup document to mirror the way the actual hardware is connected in your studio.

When you finish connecting device icons, your Studio Setup document will function as a graphic representation of the MIDI components in your studio.

☆ *IMPORTANT: The Studio Setup document should reflect, as accurately as possible, the actual connection of MIDI devices in your studio. OMS-compatible applications derive their knowledge of the devices in your studio from the Studio Setup document.*

CONNECTING MIDI DEVICES TOGETHER

To “connect” MIDI devices together in a Studio Setup document, simply drag one device icon onto another.

Using this technique, you can connect...

- MIDI devices to MIDI interfaces, as discussed in [Connecting Devices to a MIDI Interface \(pg. 30\)](#).
- MIDI devices to other MIDI devices. This technique is used when “daisy chaining devices using MIDI Thru jacks, as discussed in [Using MIDI Thru Ports \(pg. 33\)](#).
- MIDI patchbays to MIDI interfaces, as discussed in [Using MIDI PatchBays \(pg. 37\)](#).
- MIDI devices to MIDI patchbays, as discussed in [Using MIDI PatchBays \(pg. 37\)](#).

CONNECTING DEVICES TO A MIDI INTERFACE

Assume you have a 1-in x 3-out standard MIDI interface, and that you defined two MIDI devices, one of which was added to the top of your Studio Setup document (as shown in [Figure 19](#)).

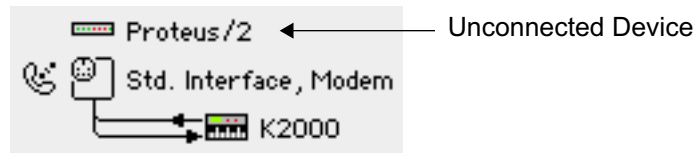
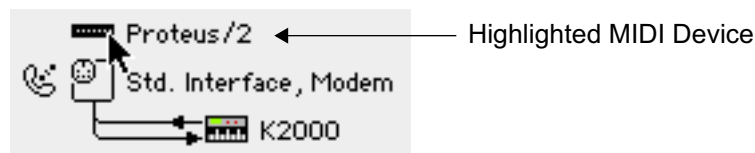


Figure 19: Studio Setup Document with Unconnected Device

To connect the Proteus/2 to your MIDI interface:

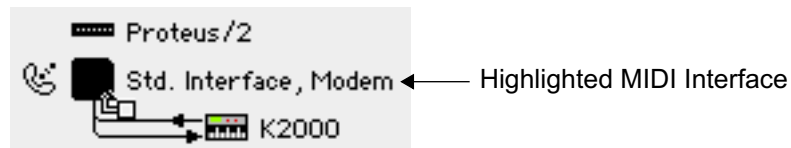
- ① Move the cursor over the Proteus/2 icon, then press and hold the mouse button. The MIDI device becomes highlighted.



- ② While still holding the mouse button, drag the cursor over the MIDI interface icon. Notice, when you drag, that the cursor becomes a “drag cursor.”



The MIDI interface becomes highlighted.



- ③ Release the mouse button. OMS Setup “connects” the MIDI device to the MIDI interface.

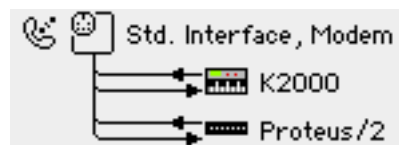
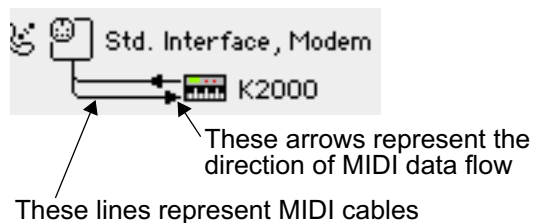


Figure 20: Studio Setup Document Shows Both MIDI Devices Connected to the MIDI Interface

CONNECTING AND DISCONNECTING MIDI CABLES

The last step in defining your Studio Setup document is to connect or disconnect MIDI cables to reflect the actual cabling in your real MIDI studio.

The Studio Setup document represents each connected MIDI device with a pair of lines running in and out of its left side. These lines represent MIDI cables and the arrows indicate the direction of MIDI data flow.



To “disconnect” a cable in a Studio Setup document, simply click its directional arrow. To reconnect a cable, click it again.

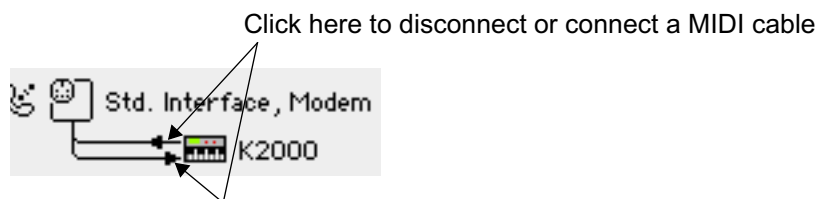


Figure 21: Disconnecting/Connecting Cables

PRACTICAL EXAMPLE

[Figure 22](#) contains a 1-in by 2-out MIDI interface. Obviously this Studio Setup document is wrong—the MIDI interface contains only *one* MIDI In jack, yet the Studio Setup document shows *two* synthesizers sending MIDI data to the interface.

This document shows TWO MIDI cables connected to the interface’s single MIDI In port—obviously an incorrect representation.

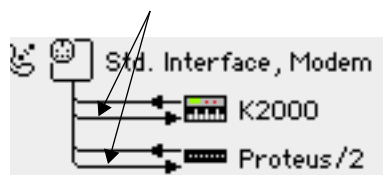
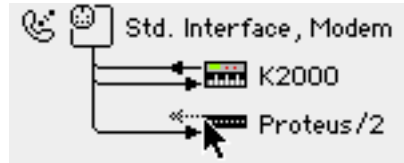


Figure 22: Incorrect MIDI Cabling

The actual MIDI studio has the K2000's MIDI Out jack connected to the MIDI interface and both device's MIDI In jacks connected to the MIDI interface. To modify your Studio Setup to show the correct connection:

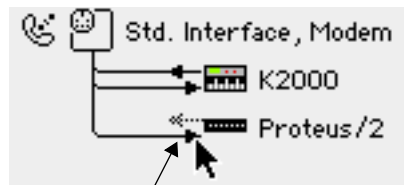
- ① Click the MIDI Out arrow to the left of the Proteus/2.
OMS Setup removes the cable from the Studio Setup document. Your Studio Setup document now accurately reflects the cabling in your MIDI Studio.



DISCONNECTING MIDI DEVICES

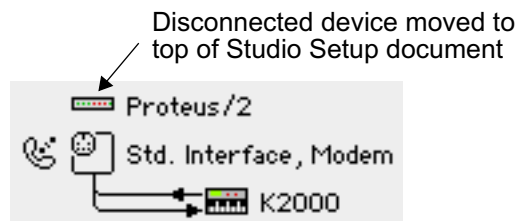
If you disconnect a device in your actual studio, you should also disconnect it in your Studio Setup document. To do so:

- ① Click both directional arrows to the left of the MIDI device you wish to disconnect.



Click both directional arrows to disconnect a MIDI device

OMS Setup disconnects the MIDI device and moves it to the top of the Studio Setup document.



This is better than deleting the device because it remains in your Studio Setup document. Then, if you reconnect the device at a later date, you need only re-connect it in the Studio Setup document, as well.

CH 5: SPECIAL STUDIO SETUP TECHNIQUES

USING MIDI THRU PORTS

Most MIDI devices have a MIDI Thru port, which passes along any MIDI data received on the device's MIDI In port. MIDI Thru ports let you "daisy-chain" MIDI devices. In a Studio Setup document, you represent Thru port connections by connecting one MIDI device to another.

THRU EXAMPLE 1 Assume you have two MIDI devices connected as shown in [Figure 23](#).

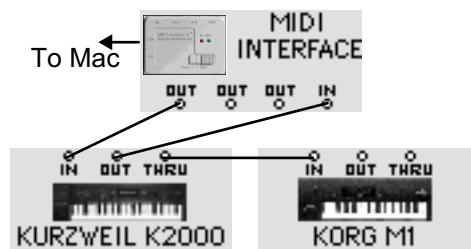


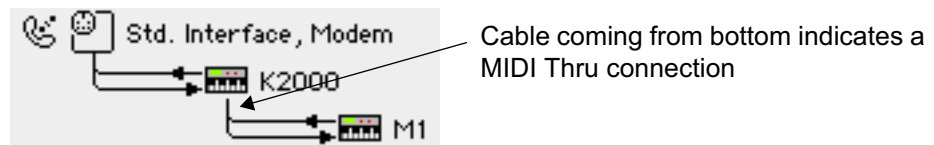
Figure 23: Daisy Chained MIDI Devices

To create this connection in a Studio Setup document:

- ① Drag the M1 icon on top of the K2000.



OMS Setup connects the M1 to the K2000 indicating a "Thru" connection.



- ② Click the M1 MIDI Out arrow to disconnect it.



Your Studio Setup document now accurately reflects the cabling in your actual MIDI studio.

THRU EXAMPLE 2

Assume you have two MIDI devices connected as shown in [Figure 24](#).

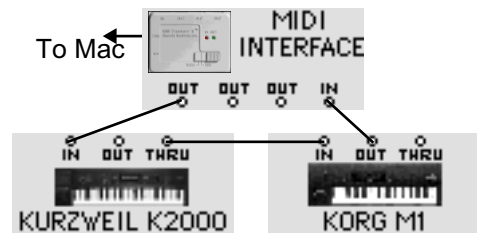
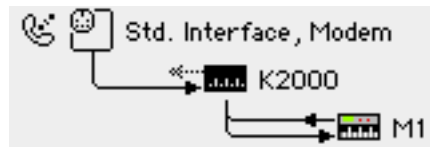


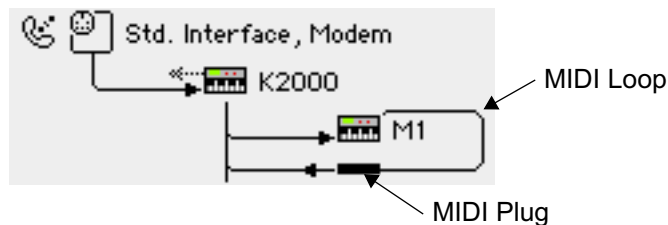
Figure 24: Alternative MIDI Daisy Chain

To create this connection in a Studio Setup document:

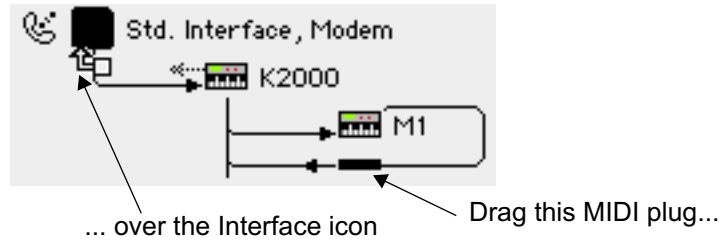
- ① Drag the M1 icon on top of the K2000 icon, then disconnect the K2000's MIDI output.



- ② Click the M1 icon to select it (highlighting it).
- ③ Choose **Studio>Different In/Out Ports**.
OMS Setup creates a MIDI loop with a MIDI plug.



- ④ Drag the MIDI plug onto the MIDI interface icon.



OMS Setup creates the Studio Setup document shown in [Figure 25](#), which now accurately reflects the MIDI connections shown in [Figure 24](#).

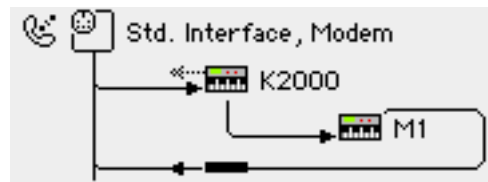


Figure 25: Correct Studio Setup Document

USING MIDI MERGERS

A *MIDI merger* combines the MIDI outputs of two different MIDI devices into a single MIDI output.

For example, assume your studio has a standard MIDI interface and that you have two MIDI keyboard synthesizers. Without a MIDI merger, you could connect only one of your keyboard's MIDI outputs to your computer.

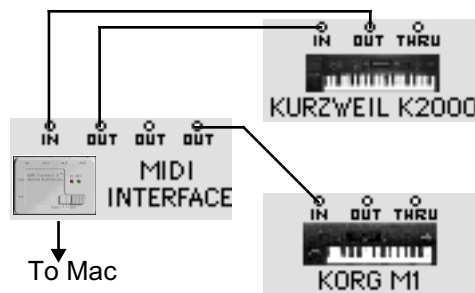
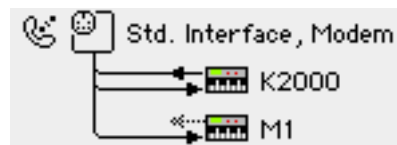


Figure 26: M1 cannot be used as a MIDI Controller

This results in the following Studio Setup document:



By using a MIDI merger, you could combine the outputs of both keyboards, so that either could be used as a MIDI controller.

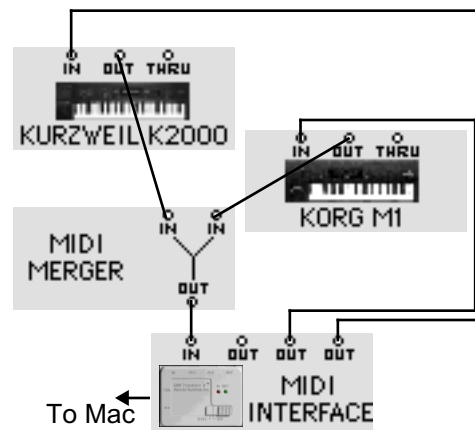


Figure 27: Connecting a MIDI Merger

To indicate the use of an external MIDI merger in the Studio Setup document, simply connect the MIDI outputs from both merged devices to the MIDI interface as shown in [Figure 28](#).

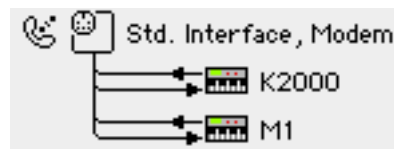


Figure 28: Studio Setup Indicates Use of a MIDI Merger

Notice that both the K2000 and the M1 can send MIDI data to the interface. The MIDI merger does not appear in the Studio Setup document, but its function is represented by the two MIDI cables coming from the two MIDI devices.

USING MIDI PATCHBAYS

A *MIDI patchbay* (sometimes called a patcher, switcher, or thru box) is an external box that contains numerous MIDI In/Out jacks, which allows you to connect many MIDI devices to a single MIDI interface.

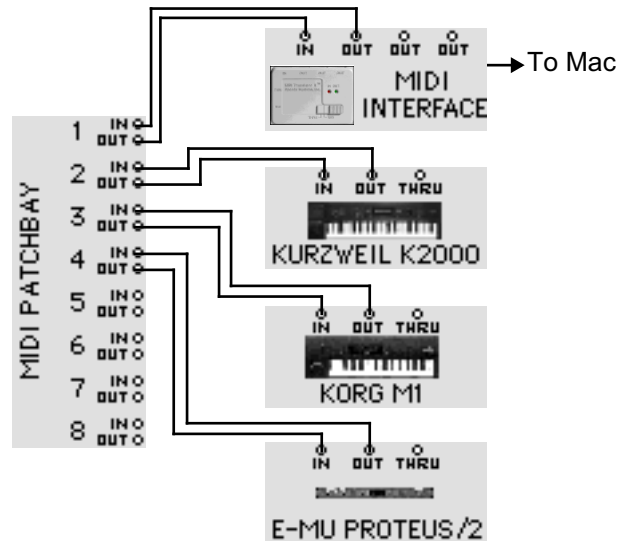


Figure 29: Studio With MIDI Patchbay

[Figure 30](#) shows a Studio Setup document for the MIDI studio shown in [Figure 29](#).

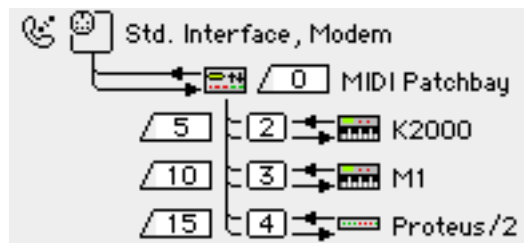
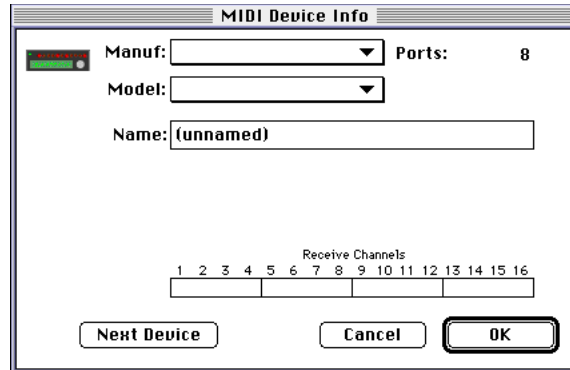


Figure 30: Studio Setup with MIDI Patchbay

ADDING A MIDI PATCHBAY TO THE STUDIO SETUP DOCUMENT

This section discusses how to configure a Studio Setup document using a MIDI patchbay. More detailed instructions are in a separate *Technical Publication* at Opcode's Web site.

- 1 Choose **Studio>New Patcher**.
The Patcher Info dialog box appears.



- 2 From the pop-up menus, select the manufacturer and model of your MIDI patchbay.
You can select "other" if you don't see your patchbay in the list.
- 3 Use the **Ports** numerical to enter the number of MIDI ports (In/Out MIDI jack pairs) on your MIDI patchbay.
OMS Setup enters the number automatically when you select a known patchbay from the **Manuf** and **Model** pop-up menus.
- 4 Using the **Receive Channels** check boxes, select the MIDI channel on which your patchbay received MIDI program change information.
- 5 Click the **OK** button.
OMS Setup adds the MIDI patchbay to the top of your Studio Setup document.
- 6 Drag the patchbay icon onto the MIDI interface icon to connect it.
- 7 Drag MIDI devices onto the patchbay icon to connect them.

[Figure 31](#) shows the anatomy of a typical MIDI patchbay connection.

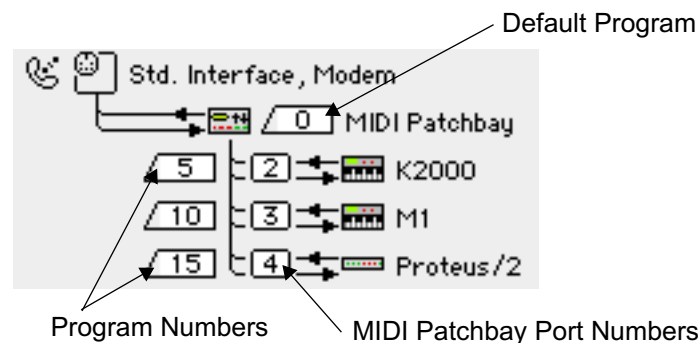


Figure 31: MIDI Patchbay Anatomy

- ⑧ Set the ports and program numbers to mirror your MIDI patchbay's actual operation (as discussed below).

Briefly:

- **MIDI Patchbay Port Numbers:** These numerals correspond to the numbered ports on your MIDI patchbay. For example, if your Korg M1 is connected to port 3 of your MIDI patchbay, set the numerical next to the M1 to "3".
 - **Default Program:** Every MIDI patchbay needs one internal program that's designed to 1) transfer MIDI data from any MIDI controller to your Mac, and 2) transfer MIDI data from the Mac to every MIDI device. This is called the "default" program. Set the Default Program numerical to match the MIDI program number of the patchbay's internal "default" program.
 - **Program Numbers:** You should program your MIDI patchbay such that each MIDI device has its own patchbay program that sends MIDI data *only* to that device and receives MIDI data *only* from that device. Set each Program Number numerical to match the MIDI program number that does this in the patchbay's internal memory.
- ☆ **IMPORTANT:** See the Technical Publication named "Using OMS with a MIDI Patchbay" for detailed information about patchbay programming and Studio Setup configuration.

USING MULTIPOINT MIDI INTERFACES

A multipoint MIDI interface is basically a MIDI interface and patchbay in a single box. A classic example is Opcode's Studio 4.

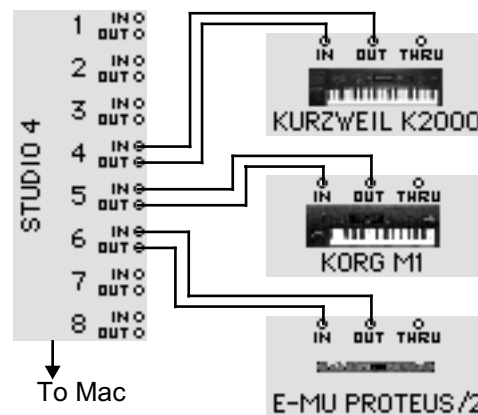


Figure 32: Studio With Multipoint MIDI Interface

[Figure 33](#) shows a Studio Setup document for the MIDI studio shown in [Figure 32](#).

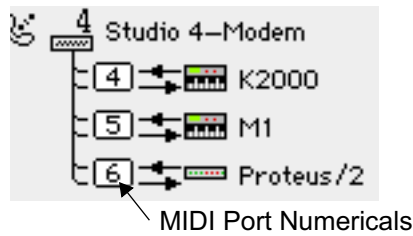


Figure 33: Studio Setup with Multiport MIDI Interface

Make sure you set the MIDI Port numericals to mirror the physical ports used on your MIDI interface. For example, if your M1 is connected to Port 5 on the Studio 4, set the M1's MIDI Port numerical to "5" in the Studio Setup document.

CREATING A "DO NOTHING" PATCH

If you use a programmable multiport MIDI interface, it's important to program a "do nothing" patch into its internal memory. MIDI sequencers perform their own MIDI routing and thru operations, so your multiport interface needs a program that does *NO* internal MIDI routing of its own—this is called the "do nothing" patch.

For example, if you use Opcode's Studio Patches program (which comes with Opcode's multiport MIDI interfaces), your "do nothing" patch would contained no modules (as shown in [Figure 34](#)).



Figure 34: "Do Nothing" Sequencing Patch

For more information about Studio Patches, see your Studio Patches manual. For more information about programming other MIDI interfaces, see their manuals.

USING QUICKTIME™ WITH OMS

OMS offers total integration with Apple's QuickTime technology. Using OMS, you can:

- Use any MIDI sound module to play the MIDI data contained in a QuickTime movie.
- Use QuickTime Musical Instruments as your OMS playback device.

USING A MIDI SOUND MODULE TO PLAY A QUICKTIME MOVIE

OMS, when used with QuickTime 2.5 or later, can route MIDI data contained in a QuickTime movie to any MIDI device in your studio.

- ① Open the QuickTime™ Settings control panel.
- ② For the **Music** settings, check the **OMS** option.
- ③ Use the menu next to the OMS option to select a General MIDI compatible synthesizer from those contained in your current OMS Studio Setup document.

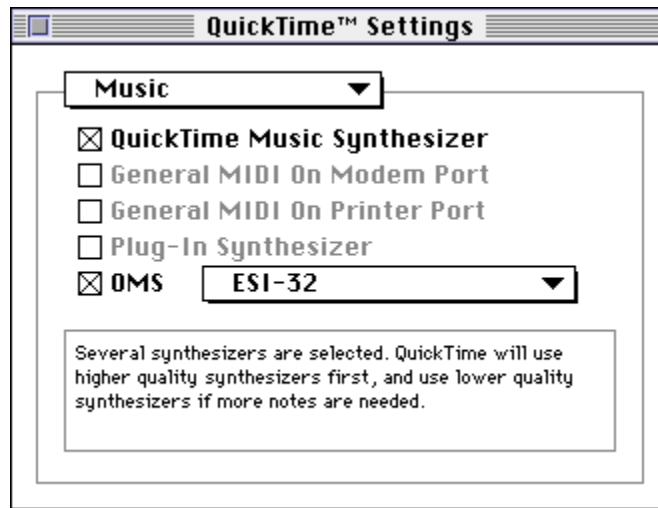


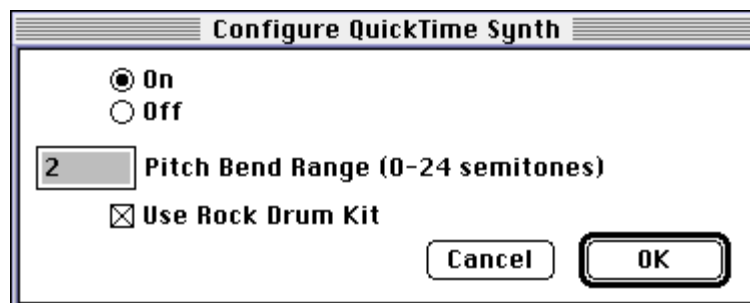
Figure 35: QuickTime™ Settings Control Panel

- ④ Close the Control Panel.
- ⑤ Play a QuickTime file that contains MIDI data.
OMS Sends the MIDI data to the selected device. In the previous example, the E-mu ESI-32 plays the MIDI data contained in the QuickTime movie.

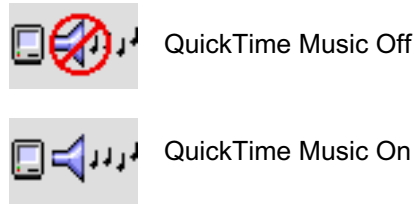
USING OMS TO PLAY QUICKTIME MUSICAL INSTRUMENTS

If you find yourself stuck without any external MIDI sound modules, OMS can use Apple's QuickTime Musical Instruments to play back MIDI sequences. To do so:

- ① In your current Studio Setup document, double-click the QuickTime Music driver to open its configuration dialog box.



- ② Click the **On** radio button to turn on QuickTime Musical Instruments.
IMPORTANT: QuickTime Musical Instruments are turned off by default (as indicated by the slash through its icon in the Studio Setup document).



This is because QuickTime Musical Instruments can interfere with digital audio playback using Sound Manager. You should not use Sound Manager and QuickTime Musical Instruments simultaneously.

- ③ Set the **Pitch Bend Range** numerical to the desired amount.
In general, most synthesizers use a pitch bend range of 2 semitones, since it produces the most “natural” sounding results. However, you can set any pitch bend range you desire.
- ④ Decide whether or not you want to use the Rock Drum Kit.
If the option is checked, your sequences play back using a drum kit equivalent to General MIDI Drum Patch #9. If the option is unchecked, your sequences play back using a drum kit equivalent to General MIDI Drum Patch #1 (standard kit).
- ⑤ Click **OK**.
- ⑥ Open an OMS-compatible application and, from any MIDI destination menu, select a QuickTime Musical Instrument.

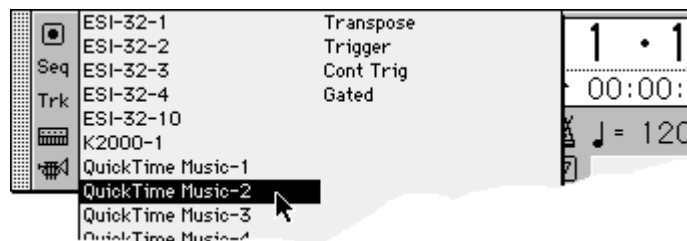


Figure 36: Selecting a QuickTime Musical Instrument in Vision's Control Bar

OMS routes MIDI data from your OMS-compatible application to Apple's QuickTime Musical Instruments driver—eliminating the need for an external sound module.

TESTING YOUR STUDIO SETUP DOCUMENT

OMS Setup provides a test mode to check the accuracy of your Studio Setup document. To enter test mode:

- ① Choose **File>Open Current Studio Setup** if your current Studio Setup document is not active.
- ② Select **Studio>Test Studio**.
The Test Studio command toggles test mode on and off. When test mode is active, the **Test Studio** option will have a check next to it. Also, the cursor in the Studio Setup document will change to an eighth note when it's over a MIDI device or interface icon.

TESTING MAC-TO-MIDI DEVICE CONNECTIONS

To test the flow of MIDI data from your Macintosh into each of your MIDI devices:

- ① Click a MIDI device icon with the note cursor.
This sends random notes to the device on the MIDI channels on which the device receives. To make sure the notes are audible, a MIDI volume message sets every channel's volume to 127. Listen for a cacophony of notes (or watch your device's MIDI indicator LED).

TESTING MIDI DEVICE-TO-MAC CONNECTIONS

To test MIDI data flow from MIDI devices into the Mac, each device must be able to generate MIDI data. On controller instruments just strike a key, pluck a string or hit a pad. When the Mac receives the MIDI data, the line connecting the two devices blinks and a voice that says "MIDI received" emanates from your Macintosh.

- ☆ *NOTE: If your Studio Setup contains MIDI merging (multiple sources into one port), the wrong arrow may flash when testing MIDI connections from devices connected to the merger. When MIDI arrives from a merged source, only one of them is going to flash, and it won't necessarily be the one that really sent the data.*

For devices that have no keyboard, the best way to test MIDI data flow to the Mac is to initiate a bulk dump from that MIDI device.

EXITING TEST MODE

- ① Choose **Studio>Test Studio** to turn-off OMS Setup's test mode.